



**RAPID
MOBILE
DEPLOYMENT**

FREEWAY3000

Mobile Full Matrix Message Sign



The **Freeway3000** mobile variable message sign brings VMS Ltd Highways Agency approved Rigel optical technology to a mobile platform. The **Freeway3000** sign is versatile and robust, offering a high level of site safety for operators and conformance with the Road Traffic Act.

The **Freeway3000** Mobile VMS can be deployed at short notice allowing high quality information to be displayed to critical points of congestion.

The easily transportable unit is designed for use when temporary events are likely to bring traffic problems; for road works and in-line works on contra-flows, and offers optical performance in compliance with UK Highways Agency specification TR2136C.

The display, which can operate on solar power, is mounted on a hydraulic powered column for raising and lowering and is capable of showing both pictograms and text. A number of different options are available. It is simple to operate and uses a touch screen user-friendly Operator Interface with various options for remote control, GPS location reporting, radar speed detection, number plate recognition, and PC/ PDA operation.

The **Freeway3000** is designed around the highly successful Rigel light emitting diode display technology used in the M53 motorway message sign. It displays a full range of TD49/03 pictograms including warnings, speed restrictions, and lane closure 'wickets'.



Alternative modes of operation are possible, from static mode, radar mode, scheduled mode, cyclic mode, and bespoke, thus ensuring you can control the sign to suit the application. The unit offers a display area of 50 x 32 pixel continuous matrix with a pixel pitch of 40mm; this area can be used for text only, for pictograms, or a combination of the two.

The **Freeway3000** sign can be configured to meet your specific requirements for display, for communications and for alternative power arrangements.

VMS
VARIABLE MESSAGE SIGNS



- **Interactive Sign for use in roadworks, contraflows, and at congestion points**
- **Proven MS3 Rigel optical trechnology complies to UK HA TR2136C**
- **50 x 32 Pixel continuous matrix display for pictograms and/or text**
- **Single-axle, trailer-mounted, with tow-bar, jockey wheel, and corner jacks**
- **Weatherproof touchscreen for simple set-up and operation**



Specification - Model Ref: A100-1159

Display Area: 50 (W) x 32 (H) pixel matrix, pitch 40mm.

Optical Technology: Rigel Light Emitting Diode optics.

Display Colour: Amber/ Yellow - Wavelength 590nm.

Display Format: Text: Character format 7 x 5, 0.7 aspect ratio.

Graphics: 50 (W) x 32 (H) pixel continuous matrix.

Power Supply: On board Battery power: 12V 28Ah.

Solar Panels: 12V 320Watt peak.

Power consumption: Typical display approximately 60W. Will operate on battery supply only for up to 100 hours on fully charged batteries. Solar panels can operate sign and charge batteries, or just charge batteries.

Operation: Standalone, or integrated as part of a network operating under TRAMS software (option, see below).
Local operation through on-board Operator Interface Unit with touch screen controls.

Operating Environment Range: -20 to +60°C, 95% RH, non-condensing.

Mobility and Adjustment Facilities: Stand alone Trailer-mounted VMS.
Single-axle trailer with handbrake and over-run brakes, standard 50mm ball hitch tow bar, single 7-pin electric coupling, jockey wheel, and corner jacks.
Spare wheel with locked storage facility.
Battery powered hydraulic column raises sign to viewing position.
Rotation position indexed at ±10 and ±20 degrees Towing position lock for VMS enclosure.
Lockable enclosures for controls, electrics, and hydraulics.

Enclosure: Lightweight, vandal resistant aluminium enclosure.

Finish: Black.

Window: Full window in 5mm polycarbonate with vandal resistant finish.

Weight: 1250Kg (approximate gross laden weight).

Dimensions: Dimensions are model specific, please request details.

Integral Controller communicates over a serial communications port and can be provided with GSM cellphone protocols for remote operation (see options below).

Local operation through on-board Operator Interface Unit with touch screen controls.

Integral Controller communicates over a serial communications port and can be provided with GSM cellphone protocols for remote operation (see options below).

-20 to +60°C, 95% RH, non-condensing.

Stand alone Trailer-mounted VMS.

Single-axle trailer with handbrake and over-run brakes, standard 50mm ball hitch tow bar, single 7-pin electric coupling, jockey wheel, and corner jacks.

Spare wheel with locked storage facility.

Battery powered hydraulic column raises sign to viewing position.

Rotation position indexed at ±10 and ±20 degrees Towing position lock for VMS enclosure.

Lockable enclosures for controls, electrics, and hydraulics.

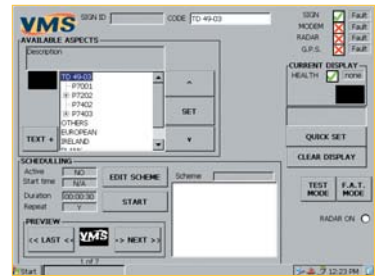
Lightweight, vandal resistant aluminium enclosure.

Black.

Full window in 5mm polycarbonate with vandal resistant finish.

1250Kg (approximate gross laden weight).

Dimensions are model specific, please request details.



Options (quote reference in brackets when ordering)

| | | | |
|----------------------------------|-------------|---------------------------------|-------------|
| Auxiliary Battery Charger | (A100-1256) | Radar Speed Detection | (A100-1253) |
| GPS Positioning System | (A100-1257) | Number Plate Recognition | (A100-1254) |
| TRAMS Networking | (A100-1258) | Cellular Modem | (A100-1255) |
| PDA/ Portable PC | (A100-1259) | Wind-Assisted Power | (A100-1260) |